

Clamp Constructed Hygienic Stubby Pumps

For Viscous Products That Flow.

Kecol air operated 'CLAMP' construction piston pumps can be used in conjunction with Maxiprime & Megaprime Pressure Priming Systems for the transfer of pastes and other high viscosity products that do not flow easily or can also be mounted vertical or horizontally on 2 or 4 wheeled trolley systems.

For Pastes & High Viscosity Products

The main difficulty with pastes and high viscosity products that do not flow is that the pump cannot be kept primed and simply cavitates, pumping air instead of product. The solution is to use a Kecol twin cylinder pressure priming system in conjunction with a Kecol Clamp Construction Piston Pump. These pressure priming systems 'force feed' the Kecol piston pump, maintaining a positive prime on the pump and thus ensuring that it does not cavitate. As the product level falls, the sides of the drum are wiped clean by the wiper ring on the follower plate assembly of the priming system.

Features & Benefits

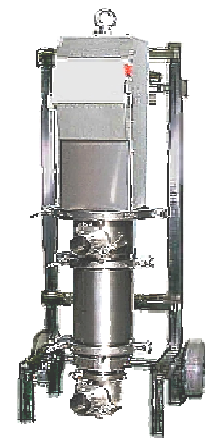
Variable Output and pressure

Can be stalled without damage

316 Stainless Steel contact parts

Polished stainless steel finish

Quick Release System between Air Motor & Pump assembly fitted as standard. **Full Quick Release Air Motor** options are also available



Vertical Stubby Pump
on two-wheel trolley

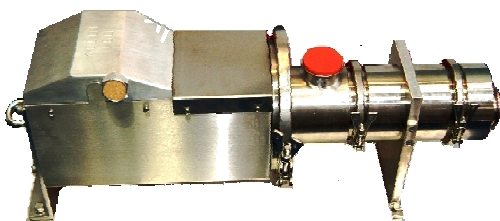
Typical Applications

Food

Transfer of chocolate cream, peanut butter, triple concentrate tomato puree, cooking fat, curry paste, fruit pastes, garlic butter, jam, margarine, marmalade, fondant, meats, etc

Pharmaceutical & Cosmetics

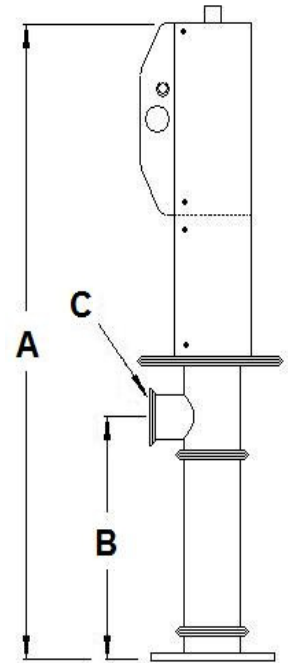
Creams, eye ointment, hand cream, Lanolin Magnesium Hydroxide, Mascara, petroleum jelly, Toothpaste, zinc & castor oil, etc



Horizontal Pump models available

KECOL CLAMP CONSTRUCTED PISTON PUMPS

Model	Tube Material	Seal Material	Output L/Min	Ratio	Weight Kg's	Air Connection BSP(F)	Air Req'd Ltr./Mi	A	B	C
H8050 STS.TC	St.St	P.T.F.E	20	5:1	18	1/2"	425	725	295	1½" CLAMP
H10050 STS.TC	St. St	P.T.F.E.	20	10:1	23	1/2"	623	800	295	1½" CLAMP
H10075 STS.TC	St. St	P.T.F.E.	45	4:1	32	1/2"	623	800	295	2" CLAMP
H16075 STS.TC	St. St	P.T.F.E.	45	10:1	39	1/2"	1218	850	325	2" CLAMP
H160115 STS.TC	St. St	P.T.F.E.	90	5:1	59	1/2"	1218	850	320	2½" CLAMP
H160125 STS.TC	St. St	P.T.F.E.	136	3:1	64	1/2"	1218	850	320	2½" CLAMP
H200115 STS.TC	St. St	P.T.F.E.	90	7:1	73	1"	1650	1050	440	2½" CLAMP
H200125 STS.TC	St. St	P.T.F.E.	136	4.5:1	75	1"	1650	1050	440	2½" CLAMP



Megaprime System

Megaprime Systems

Based on the Maxiprime principle of operation the Megaprime twin cylinder pressure priming system is suitable for vessels up to 1200mm diameter and can also be manufactured for use with square bins & Industrial Bulk Containers.



Water Jacketed Pump

Water Jacketed Pumps & Followerplates

For situations where the product temperature needs to be maintained, Kecol Stubby Length Pumps & Followerplate assemblies can be offered as Water Jacketed, allowing either hot or cold water to be circulated around the wetted end of the pump.



Special System

Non-Standard Pumps & Systems

Whether your requirement is for a special length piston pump with a non-standard outlet fitting or a Powerlift, Powerprime or Maxiprime system for non-standard vessels, Kecol will design and manufacture a unit to suit your application requirements. Our engineers will be pleased to discuss the many different options that are available such as interlocking guards, jacking or standard castors, drum loading systems, quick strip pumps, dispensing and filling systems, etc



Measuring Cylinder

Measuring Cylinders

Used in conjunction with a Kecol Piston Pump Pressure Priming System these Measuring Cylinders will dispense a predetermined volume of liquid or viscous product. They are constructed of either carbon steel or 316 stainless steel and are available in either manual or pneumatic actuation and fixed or adjustable outputs from about 200ml up to 3 Litres. Accuracy is normally better than $\pm 1\%$.